



WILLOUGHBY GIRLS HIGH SCHOOL

A Leader in Girls Education

NEWSLETTER

Phone : 9958 4141

www.wghs.nsw.edu.au

08 MARCH 2019

MARCH 2019 CALENDAR

Week 7A 11 – 16 March

- Monday 11** Year 9 Wellbeing Day
'How to Raise Brave Girls' Parent Seminar
- Tuesday 12** Years 9 Commerce Excursion
Rowan Kunz Parent Evening Presentation

Wednesday 13

Thursday 14 Year 7 Peer Support

Friday 15

Saturday 16 RSL Music Spectacular Heat

Week 8B 18 – 23 March

Monday 18

Tuesday 19 Year 11 Business Studies Excursion
P&C Meeting

Wednesday 20 Year 7 History Excursion

Thursday 21 Language Network Meeting

Friday 22 Year 7 Peer Support

Saturday 23 Duke of Ed Practice Hike

(Red typeface denotes the event is open to the public)



Travelling to and from School

All girls who are eligible for a bus pass should have received it by now. Girls must use their pass or pay the appropriate fare. For students without a pass, who wish to travel to Chatswood in the afternoon, they should make sure they have money to pay the fare.

State Transit monitors how many girls are seeking to use public buses rather than school specials, particularly in the afternoon. I would encourage all girls to travel on the school specials provided. The public buses do not have to convey students using bus passes if there is a school special available.

Girls should use the school special buses and the 267 bus wherever possible. On Thursday afternoon when many girls finish at 2.30pm, there are a number of school special buses to Chatswood. There is no need for girls to get on public buses at this time.

It is expected that students will behave in an acceptable manner whilst waiting for a bus. They should line up quietly, not crowd across the footpath, nor speak rudely to members of the public. There is an ongoing issue with the M40 from Chatswood. All students are reminded that they are required to vacate their seat for an adult passenger when travelling on public buses and trains. Students are not to sit in a seat designated for the disabled or elderly, and are to move down the bus when requested. This applies regardless of whether a fare has been paid.

WGHS P&C		
	facebook.com/wghspandc	Next P & C Meeting Tuesday 19 March 2019
	wghspandc@gmail.com	
<ul style="list-style-type: none">✓ Please follow our Facebook page to stay informed of interesting things happening in the parent community. You don't have to be a Facebook member to access the page.✓ All parents are welcome at P&C meetings, held twice per term at 7.00pm in the staff common room. (Access via front door).✓ Any queries or matters to be raised can be raised via the Secretary at the above email address at any time.		

Excursions

Excursions are an important part of the curriculum at Willoughby Girls High. All excursions are planned to support the curriculum and extend the learning experiences of students. To facilitate the organisation of these excursions, it is essential that permission notes and payments are received by the due date as advised in the information letter. The due date is final and any monies paid after the due date will be refunded. The student will not be allowed to participate in the excursion and will be required to remain at school and complete alternative work.

Please ensure payments and permission notes are submitted in a timely manner.

Parking

Parents are reminded to not double park when dropping off or collecting your daughters. It is a major safety issue for the students as they arrive and leave school each day. Park in a side street and allow your daughter to walk into the school grounds.

Also, all parents are reminded the school grounds are reserved for staff. All car parks are out of bounds to students, so parents are not to drive into the school grounds to pick up or drop off students. Please ensure you drop off and pick up your daughter safely, and according to the RTA rules. The best area is the side street off Keary St because your daughter can then safely cross the street using the pedestrian crossing. Thank you for your cooperation.

Ms Watts
Deputy Principal

Tell Them from Me Survey

Our school, like many other public schools in the state, will participate in a Department of Education initiative: the *Tell Them From Me* student feedback survey. The survey measures factors that are known to affect academic achievement and other student outcomes. The focus of the NSW-wide survey is on student wellbeing, engagement and effective teaching practices.

More information about the survey is available at: <http://surveys.cese.nsw.gov.au>

The survey is a great opportunity for our students to provide us with valuable and quick feedback on what they think about school life, how engaged they are with school and the different ways that teachers interact with them. More than 6,300 schools in Australia and around the world have used *Tell Them From Me* to survey 5.4 million students. Capturing the voices of our students will help improve how we do things at our school.

I want to assure you that the survey is confidential. The survey is conducted online and will typically take less than 20 minutes to complete. It will be administered during school hours **between 11 March and 29 March**. Participating in the survey is entirely voluntary.

All parents and carers have been emailed regarding this survey. Please check your emails for more information. Thank you.

Ms Atchison
Deputy Principal

Year 9 Visual Design Excursion to Flat Rock Gully

On Tuesday, our Year 9 Visual Design class walked down to Flat Rock Gully to create some observational drawings as part of our textiles design project this term. This project involves the designs of native flora being combined as one cohesive design that can be printed alongside each other.

Using the technique of silk screen printing, we create an illusion of it being one continuous fabric design. As part of this, we took photos of various flora and fauna to use in our soon-to-be screen printed designs.

We slowly walked around the park, stopping to take photos of any plants that caught our attention before stopping in a field to draw the wildlife around us. It was a great field trip and I certainly wouldn't mind doing it again.

Anevay F – Year 9



International Womens Day

Willoughby Girls High School welcomed Alison French who was a recent law graduate and has worked in remote communities in Western Australia with Indigenous Australians. She was joined by Aminata who addressed the assembly on her life growing up in Sierra Leone and assisted in setting up the Aminata Maternal foundation for mothers in Sierra Leone to receive the care they require.

The SRC/Prefects held a fundraising cake stall for International Womens Day with all money raised to be donated to the Aminata Maternal foundation.



WGHS Swimming Carnival



Environmental Club – Request for Parent or Community Volunteer

The SES Club at Willoughby is looking for any parent or community volunteer with an interest in native gardening.

We have a group of around 12 students between Years 7-12 who would like to do some planting in the garden and attract native species especially bees. We would also like to develop a bush tucker garden.

Students are keen and would be available to meet at lunchtimes or before school.

If you are a parent or friend of the school who has some interest in this area, please contact Ms Tyerman through the school email.



10 Geography - Human Wellbeing

Epping Boys High School were invited to join our Year 10 Geography classes to discuss and survey one another to find out what makes them happy



'How to Raise Brave Girls'

Years 7-10 Parents/Carers - Please join us for our upcoming 'How to Raise Brave Girls' Parents Evening

Monday 11th March

7.00-9.00pm

Multipurpose Hall – Willoughby Girls High School

Caroline Pemberton, a former Miss Australia and a renowned television presenter, will have discussions on the topics of:

- ✚ Supporting your daughter to find her "tribe" and the importance of friendship to teens
- ✚ 'Frenemies' – What they are, and how to equip your daughter to identify and foster positive peer relations (Otherwise known as 'Relational Aggression' or using friendships as weapons)
- ✚ Your role as parents in managing bullying both face-to-face and online and some useful strategies.
- ✚ Positive use of social media (age appropriate engagement and how to set healthy boundaries without the battle)
- ✚ Modelling positive communication and conflict resolution at home

This evening is being **offered to all WGHS parents** as a special addition to our Year 9 Wellbeing Day that is being held on the same day.

School TV – Watch this space!

SchoolTV is a new resource for all parents of WGHS students. We are currently uploading this on to our School's website in the Wellbeing section under Parents and Community.

SchoolTV is a world first wellbeing platform that addresses the modern-day realities faced by schools and parents in raising safe, happy and resilient young people.

Whilst there is a great deal of information already out there, this can often be

Confusing and overwhelming for parents. SchoolTV simplifies access to credible, sound information with realistic and practical strategies.





COMMUNITY NOTICE BOARD

NATIONAL RIDE2SCHOOL DAY 2019 FRIDAY 22 MARCH

Willoughby Girls High School

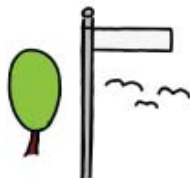
are excited to be celebrating
National Ride2School Day on Friday 22 March 2019.

In the spirit of embracing a healthy and happy start to the day, we encourage all students and their families to leave the car at home and give riding, walking, scooting or skating to school a go.

National Ride2School Day is the perfect opportunity to kick-start new healthy habits and promote the many benefits of active transport for our community.

If you can't actively travel the whole way, consider parking the car nearby and riding or walking the rest of the way.

*It's going to be a wheelie good day and
we hope to see you there!*





COMMUNITY NOTICE BOARD

Willoughby Girls High – Class of 1970

In 2020, it will be 50 years since we left school!

Hard to imagine isn't it?! I am thinking of planning a reunion in April 2020 to mark the occasion. These are my thoughts so far.

Venue: The Quarantine Station

Approx Date: A weekday in April 2020 (session time is 12.00 to 5.00)

Cost: They quoted \$75 a head for a buffet and venue hire.
(I will do decorations, music etc.)

So this is what I need from you.

- Would you like to attend?
- Can you contact anyone else from the year or let me know if anyone is unable to attend? (Particularly the girls who would otherwise have graduated in 1970.)
- Can you help on the day?
- If you have any candid photos or mementoes of school, please let me know.

I would appreciate any offers of help or suggestions for arrangements and alternative venues.

I hope to hear from you soon.

Kerry Podlogar : Email is poddycalf@hotmail.com



COMMUNITY NOTICE BOARD



Become a foster carer

Help us make a positive difference to the lives of children in your community. As a Key Assets foster carer, you will be provided with 24/7 support, a dedicated social worker and on-going training.

Change a child's life today:

☎ 1800 WE CARE
🖱 iwanttofoster.com.au





COMMUNITY NOTICE BOARD

PLAY GIRLS LEAGUE TAG *

Be part of the very first ever
Willoughby Roos girls U13 team!



For girls aged 12–13 years /
no football experience required
/ trained by qualified coaches.

Very safe, no tackling / increase
aerobic fitness / improve hand-eye
coordination and agility.



* **BE QUICK LIMITED SPACES
REGISTER YOUR INTEREST TODAY**

CALL: Marty Irvine / 0410 988 614

EMAIL: willoughbyroos@gmail.com

WEBSITE: willoughbyroos.com.au

SOCIAL:  /Willoughby/Roos

**FUN
LOCAL
FIT
FAST
SAFE**



COMMUNITY NOTICE BOARD

TUNING IN TO TEENS

EMOTIONALLY INTELLIGENT PARENTING



5 SESSION PARENTING COURSE FOR PARENTS OF TEENS

Would you like to learn how to:

- Communicate effectively with your teenager?
- Understand your teenager?
- Help your teenager with emotional intelligence and managing emotions?
- Prevent some teenager behaviour problems?
- Teach your teenager to deal with conflict?

VENUE: Chatswood Community Health Centre
57 Hercules St, Chatswood

DATES: Wednesdays 6th March - 3rd April 2019 (5 sessions)

TIME: 6.30pm - 9.00pm

COST: \$150 - subsidised rates available re: financial difficulty
REFRESHMENTS PROVIDED

BOOKINGS ESSENTIAL: <http://tntchats1.eventbrite.com.au>

PH: 8877 5376

The 5 session course will be facilitated by a qualified Parent Educator from
Child and Adolescent Parenting, Northern Sydney Local Health District



Health
Northern Sydney
Local Health District



headspace
Chatswood



COMMUNITY NOTICE BOARD

Harmony Day 2019



Let's celebrate the cultural diversity of Willoughby!

Chatswood Mall Market
Thursday 21 March 2019, 4pm – 7pm



Multicultural Mask-making Workshop for Kids

For more information or bookings visit www.willoughby.nsw.gov.au

Workshop 1: 4pm – 4.30pm | Workshop 2: 5pm – 5.30pm

K-pop Dance Workshop

All ages welcome. 6pm – 7pm

This event is proudly supported by Chatswood RSL Club





COMMUNITY NOTICE BOARD



For almost a century, student exchange programs have produced innovators, leaders and influencers across all sectors. Preparing teenagers for the social, political, technological and economic realities of the 21st century is challenging and one of the most valuable gifts is that of global experience.

WEP is a not-for-profit student exchange organisation, registered with the education departments/regulatory authorities in Queensland, New South Wales and Victoria. Our student exchange programs offer international educational experiences that provide the challenge and inspiration many teenagers seek. Students return with a greater interest in global events and cultures and develop a broad array of accomplishments.

*"Exchange is a journey for you to develop as a person and become more mature and independent. I will remember this experience forever; I have learnt more about myself, the world and China than ever before.
An exchange is the most hands-on education you can get!" Austin, China*

